

Medium peel

PEEL INTENSITY

●●●●○

COSMO PEEL

FORTE

CE 0051

Intended for the treatment of acne scars, senile lentigines, actinic keratosis.



ACTIVE INGREDIENTS

Cosmo Peel Forte: Phenol, TCA, Glycolic acid - pH ≈ 0.5

Cosmo Cream : Dextran sulfate, Allantoin, Hyaluronic acid, Vitamin C, Calendula extract - pH ≈ 4.8

Foamer 15: Glycolic acid, Enoxolone - pH ≈ 4.1

- BENEFITS FOR THE SKIN*
- Promotes the removal of **acne scars** through combined
 - Eliminates pronounced **pigmented lesions**
 - Eliminates **actinic keratosis** lesions
 - Boosts **collagen** and **elastin production**
 - Improves appearance of **wrinkles** and **sagging skin**



Sole Distributor:

REDO

MARKETING INDONESIA

Jalur Sutera Timur, Ruko Renata Blok 1A/9, Alam Sutera, Tangerang 15144, Indonesia.

Tel: 021-2966 1469

Fax: 021-3043 9750

Website: www.redo.co.id

Email: enquiry@redo.co.id

For more inquiries, please contact: John 08-78826 00689

Medium peel

PEEL INTENSITY

●●●●○

MELA PEEL

FORTE

For the appearance of pigment spots, melasma and post-inflammatory pigmentation.



ACTIVE INGREDIENTS

Foamer 15: Glycolic acid, Enoxolone – pH 4.1

Activa Peel Forte: Salicylic acid

Mela Peel Forte: Resorcinol, Citric, Lactic, Phytic and Kojic acids, Retinol, Arbutin – pH 2.23

- BENEFITS FOR THE SKIN*
- Reduces appearance of **melasma** and **pigment spots**
 - Evens **skin tone** and **complexion**
 - Improves **skin radiance** and **brightness**
 - Proven action on all mechanisms of **pigmentation**



Dermaceutic, the expert

in aesthetic dermatology

Dermaceutic is the expert in aesthetic dermatology. We were born from a collaboration between French dermatologists and now partner with more than 30,000 skin professionals internationally. By working daily with these specialists, we gain vital and ever-evolving insights into different skin types, phototypes and unique patient expectations. Thanks to this expertise, Dermaceutic is the only French laboratory with a range of professional peels certified class IIa.

Very superficial peel

PEEL INTENSITY ●○○○

MASK PEEL

For the appearance of oily and acne-prone skin, dilated pores and excess sebum. Purifies the epidermis and tightens pores.



ACTIVE INGREDIENTS

Glycolic acid: an hydrophilic ingredient, to stimulate cell renewal and eliminate dead cells.
Salicylic acid: a lipophilic ingredient, for a keratolytic action on the skin (epidermis).
 Bentonite pH ≈ 2

BENEFITS FOR THE SKIN*

- Purifies the epidermis
- Brightens **dull complexion**
- Decreases **sebum production**
- Tightens **pores**
- Regulates **oily skin** and dilated pores

CLINICALLY TESTED



Superficial peel

PEEL INTENSITY ●●○○

MILK PEEL

Intended for the treatment of mild acne, keratosis pilaris and superficial pigmented lesions.



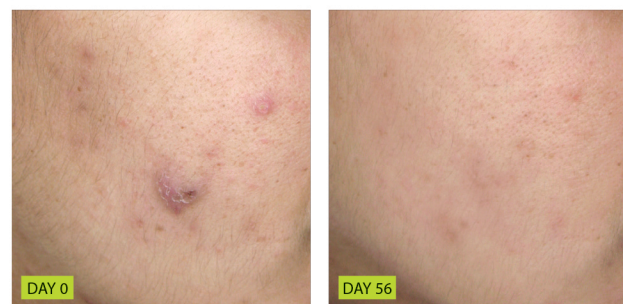
ACTIVE INGREDIENTS

Milk Peel: Glycolic, Lactic and Salicylic acids - pH ≈ 1.9
Foamer 15: Glycolic acid, Enoxolone - pH ≈ 4.1

BENEFITS FOR THE SKIN*

- Reduces **acne lesions**
- Eliminates superficial **pigmented lesions**
- Improves the condition of keratosis pilaris through an **exfoliative effect**
- Boosts **collagen** production
- Improves appearance of **fine lines and wrinkles**

CLINICALLY TESTED



Superficial peel

PEEL INTENSITY ●●○○

COSMO PEEL 12 & 15%

Intended for the treatment of solar lentigines, superficial pigmented lesions, keratosis pilaris.



ACTIVE INGREDIENTS

Trichloroacetic acid 12%, 15%: pH ≈ 0.5
Cosmo Cream: Dextran sulfate, Allantoin, Hyaluronic acid, Vitamin C, Calendula extract - pH ≈ 4.8
Foamer 15: Glycolic acid, Enoxolone - pH ≈ 4.1

BENEFITS FOR THE SKIN*

- Eliminates **pigmented lesions**
- Improves the condition of keratosis pilaris through an **exfoliative effect**
- Boosts **collagen** and **elastin production**
- **Homogenizes** and **revitalizes** the skin
- Improves appearance of **wrinkles** and **signs of premature aging**

CLINICALLY TESTED



Medium peel

PEEL INTENSITY ●●●○

COSMO PEEL 18 & 20%

Intended for the treatment of solar and senile lentigines, pigmented lesions, elastosis.



ACTIVE INGREDIENTS

Trichloroacetic acid 18%, 20%: pH ≈ 0.5
Cosmo Cream: Dextran sulfate, Allantoin, Hyaluronic acid, Vitamin C, Calendula extract - pH ≈ 4.8
Foamer 15: Glycolic acid, Enoxolone - pH ≈ 4.1

BENEFITS FOR THE SKIN*

- Eliminates **pigmented lesions**
- Reduces **photodamaged** spots
- **Homogenizes** and **revitalizes** the skin
- Boosts **collagen** and **elastin production**
- Improves appearance of **wrinkles** and **sagging skin**

CLINICALLY TESTED



Medium peel

PEEL INTENSITY ●●●○

TCA 30

Intended for the treatment of solar and senile lentigines, actinic keratosis, acne scars.

ACTIVE INGREDIENTS
Trichloroacetic acid 30%: pH ≈ 0.5



MAY BE COMBINED WITH COSMO PEEL (15 TO 20%)

Superficial peel

MEDIUM PEEL ●●○○

CRYSTAL PEEL

Crystal Peel is formulated with an innovative and stable combination of three highly effective acids recognized for their skin biocompatibility, safety profile, performance and effectiveness.



Crystal Peel is formulated with an innovative and stable combination of three highly effective acids recognized for their skin biocompatibility, safety profile, performance and effectiveness.

A smart combination of substances **ensuring effectiveness** in the treatment of skin disorders.



In-depth safety testing and analysis to guarantee a controlled superficial depth penetration of the peel allowing maximum safety while **maximizing the benefits**.



ACTIVE INGREDIENTS
Mandelic Acid, Salicylic Acid, Citric Acid pH ≈ 2.0